



A convenient
blood test to
detect the return
of cancer

For HPV-positive anal cancer surveillance

Your Blood TTMV[®] Score Can Guide the Way

An innovative blood test is helping physicians optimize HPV+ anal cancer surveillance

NavDx can help personalize your care plan

With a simple blood draw, NavDx testing can conveniently and accurately detect whether human papillomavirus (HPV)-driven cancer is present anywhere in your body. This information can help your physician create the optimal care plan for you. Routine testing to track changes in your TTMV Score offers your physician a more complete picture of your cancer status than imaging scans or anoscopy alone.

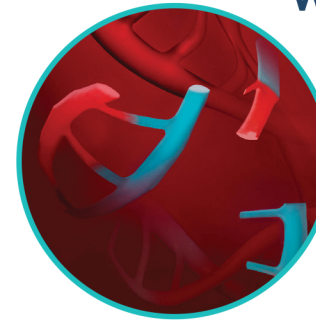
To optimize your care, your physician relies on NavDx to provide:

- ◆ Reliable information about your current TTMV Score
- ◆ The likelihood of being cancer-free
- ◆ Early signs of cancer recurrence before symptoms appear, because knowing sooner may improve your ability to fight the disease
- ◆ Clarification of questionable clinical or imaging results, helping to avoid unnecessary procedures

In the management of HPV-positive Anal cancer

Your blood has never been more important

What is a blood TTMV® Score?



TTMV-HPV DNA fragments in blood

TTMV-HPV DNA, or tumor tissue modified viral-HPV DNA, is a tumor biomarker that is specific for HPV-positive cancers. A blood TTMV Score is the unique result for a NavDx test, which quantifies circulating TTMV-HPV DNA fragments in your blood. Tracking changes in your TTMV Score gives your physician important information about your HPV-positive cancer status.

Why did my physician order a NavDx® test?

Your physician ordered a NavDx test because there is no better way to measure your TTMV Score. Using NavDx to track your TTMV Score and detect if cancer is still in your body can guide the way to personalizing your cancer care.

What is a biomarker?

A biomarker is molecule that can be objectively measured in a laboratory test to give your physician more information about your cancer status.



Routinely test with the NavDx blood test to be assured of your current TTMV Score and cancer status.

Routine testing with NavDx assures early recurrent disease detection

The NavDx test is a convenient, non-invasive, and more practical approach for detecting anal cancer recurrence.



AFTER TREATMENT:

A NavDx test can show if cancer has returned, even if you do not have symptoms or if your anoscopy and/or imaging do not show clear evidence of disease.

In a recent clinical study of HPV+ anal cancer patients where most of the enrolled patients (104 out of 117) received NavDx testing in routine surveillance following treatment across 7 US centers, the results showed that NavDx testing accurately predicted when anal cancer returned.

- ◆ The NavDx test's strong **performance is reassuring in the post-treatment setting** where negative test results are strongly associated with the absence of disease, enabling physicians to personalize follow-up care
- ◆ **NavDx testing accurately clarified 94.3% of cases** where findings from clinical exams or imaging were unclear, showing NavDx is a more definitive tool that can reduce uncertainty

Among post-treatment patients:

≥92.5%

of people whose TTMV Score remained negative had no cancer recurrence

≥96.0%

of people with one positive TTMV Score had recurrence



Monitoring your TTMV Score with NavDx testing during routine surveillance can accurately and reliably predict if cancer is present, even without symptoms



Routine NavDx testing following treatment has the potential to **detect cancer recurrences during critical periods when they are most likely to occur.**

NavDx
Optimizing HPV+ Cancer Care

Be assured of your true cancer status...

Routinely test with the NavDx blood test

The NavDx test's high-performance metrics provide reassurance that a negative TTMV Score means there is a strong likelihood that you are cancer-free, while a positive TTMV Score can provide an early warning of cancer recurrence before symptoms or imaging detection. With a simple blood draw, the NavDx test can detect whether HPV-positive cancer is present anywhere in your body, helping your physician create the best care plan for you.

Here are some questions you may want to discuss with your care team:	
◆	Am I a candidate for routine NavDx testing?
◆	How can NavDx testing be used to monitor for recurrence of my cancer?
◆	What can a positive (or negative) TTMV Score tell about my cancer status?
◆	How can detecting cancer recurrence early, before symptoms reappear, improve my overall chances of survival?
◆	Who on my care team will be ordering the test?
◆	How often should I have a NavDx test?
◆	What are my options regarding where to get my blood drawn?



Talk with your physician about convenient, routine testing with NavDx and stay informed of your true cancer status

Visit navdx.com for more information



Naveris Inc., 21 Hickory Drive, Suite 600, Waltham, MA 02451
www.naveris.com | contact@naveris.com

© 2025 Naveris Inc. | US Patent 11,168,373 | NavDx-0125-167

